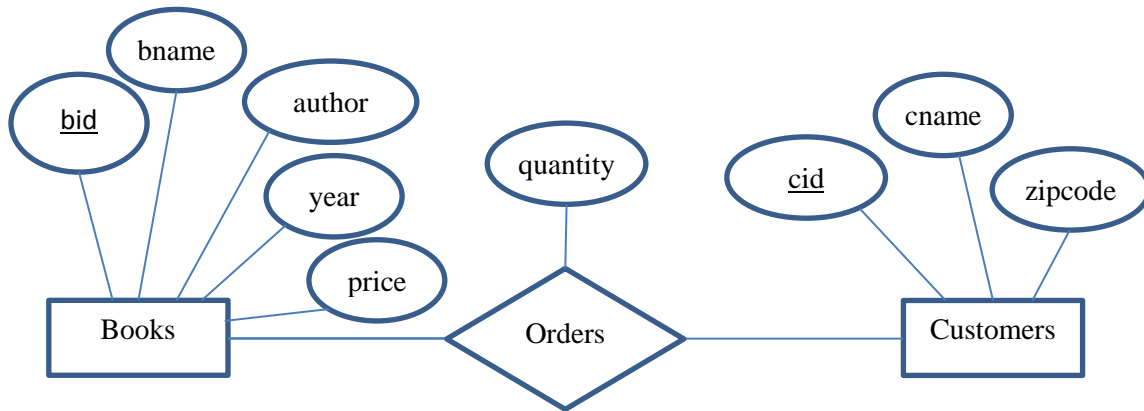
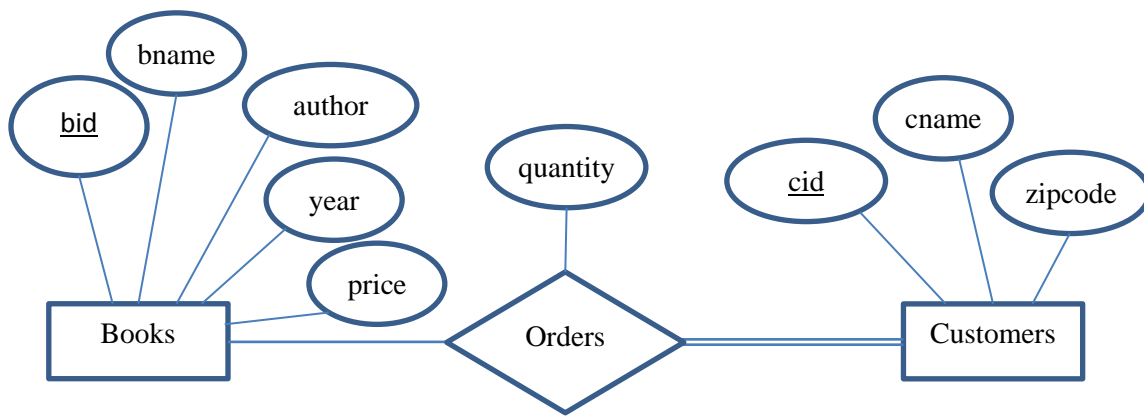


Q1.

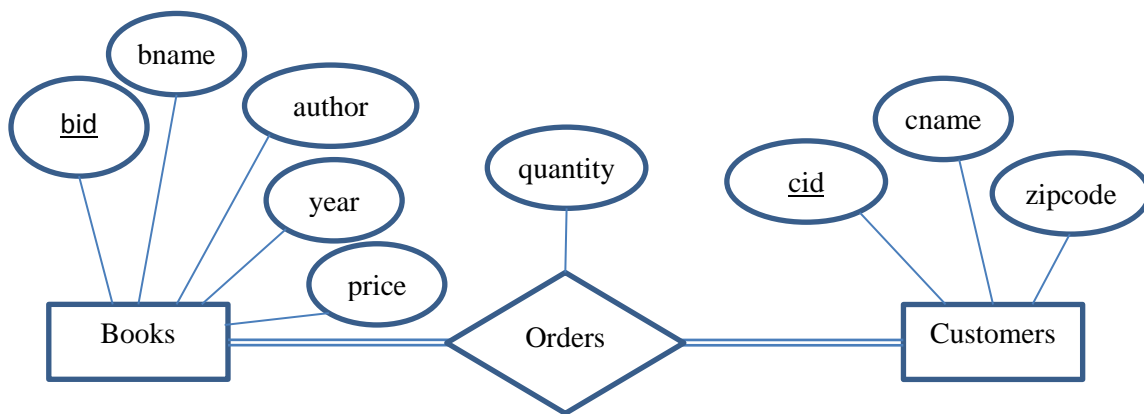
a)



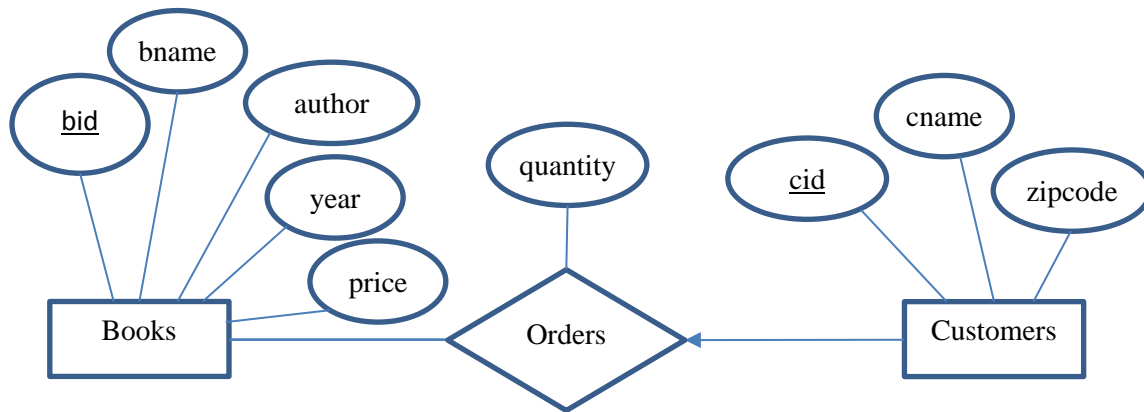
b)



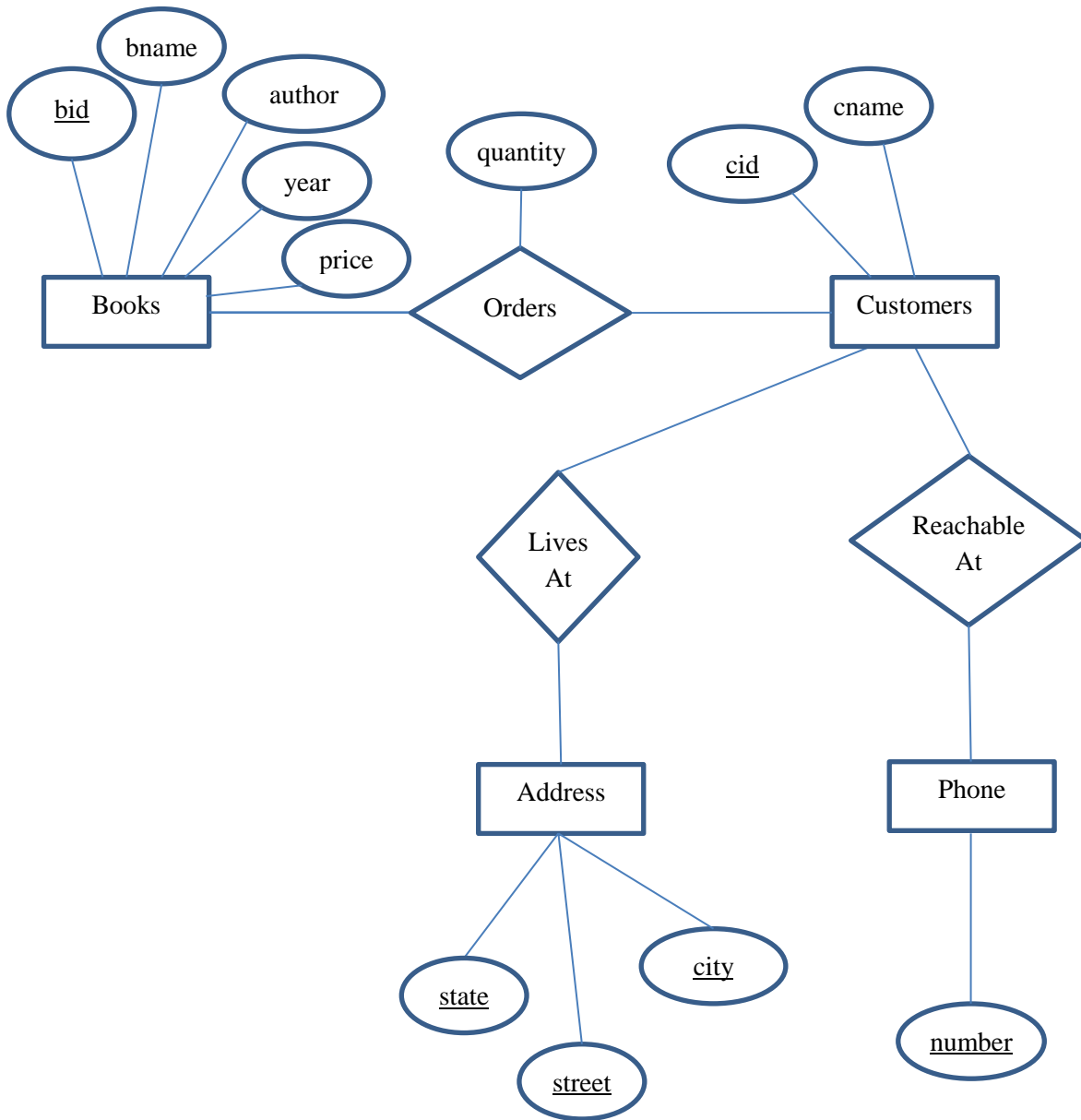
c)



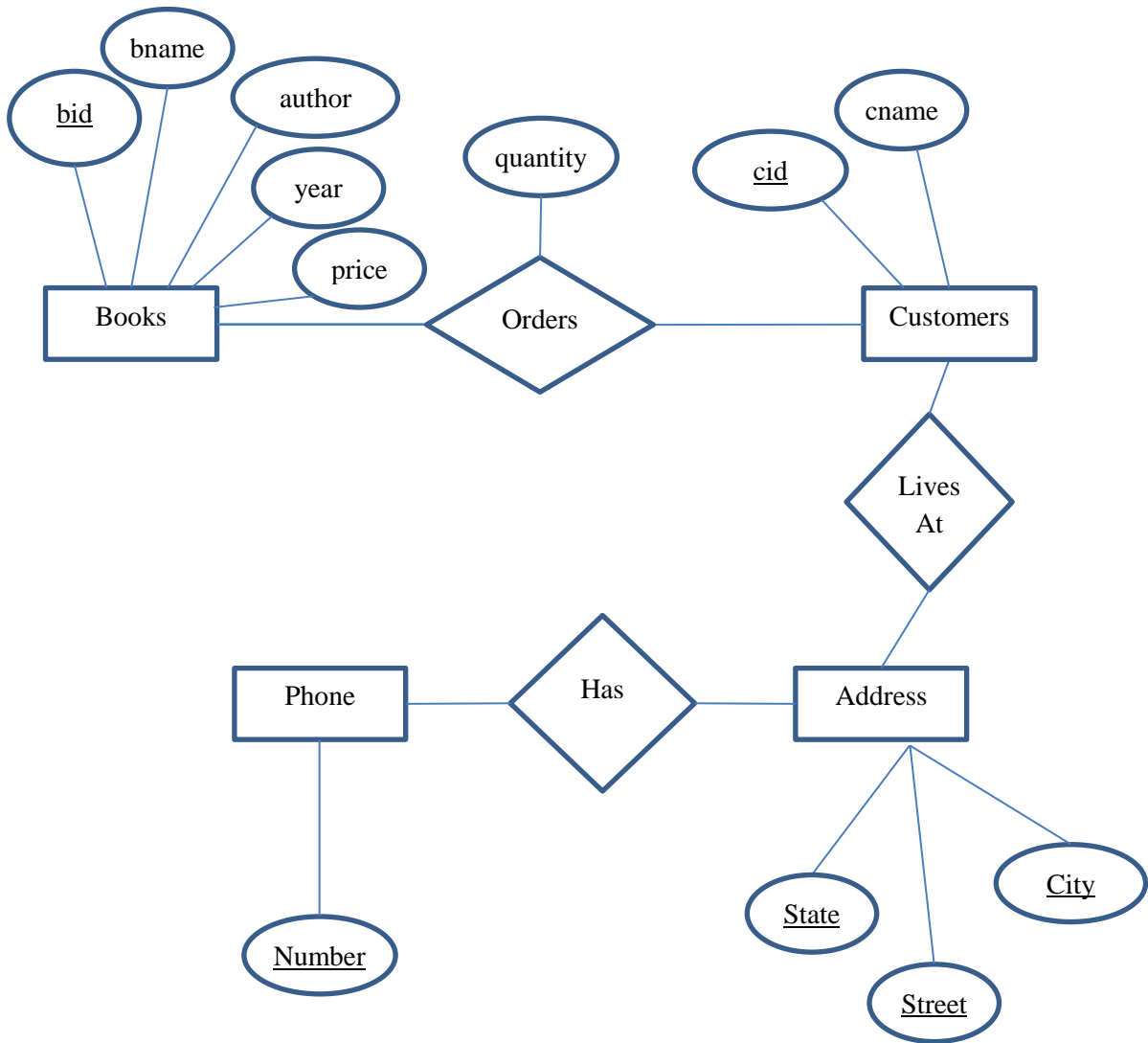
d)



e)



f)



Q2.

- a) CREATE VIEW CharactersPlayed (ActorName, ActorNationality, CharacterName, Year) AS  
SELECT A.name, A.nationality, S.character, M.year  
FROM Movies M, Actors A, StarsIn S  
WHERE A.actor\_id = S.actor\_id AND S.movie\_id = M.movie\_id;
- b) SELECT DISTINCT C.ActorNationality  
FROM CharactersPlayed C  
WHERE C.CharacterName = 'Forrest Gump';
- c) SELECT C.year, COUNT(DISTINCT C.ActorNationality) AS CountNationality  
FROM CharactersPlayed C  
GROUP BY C.year;