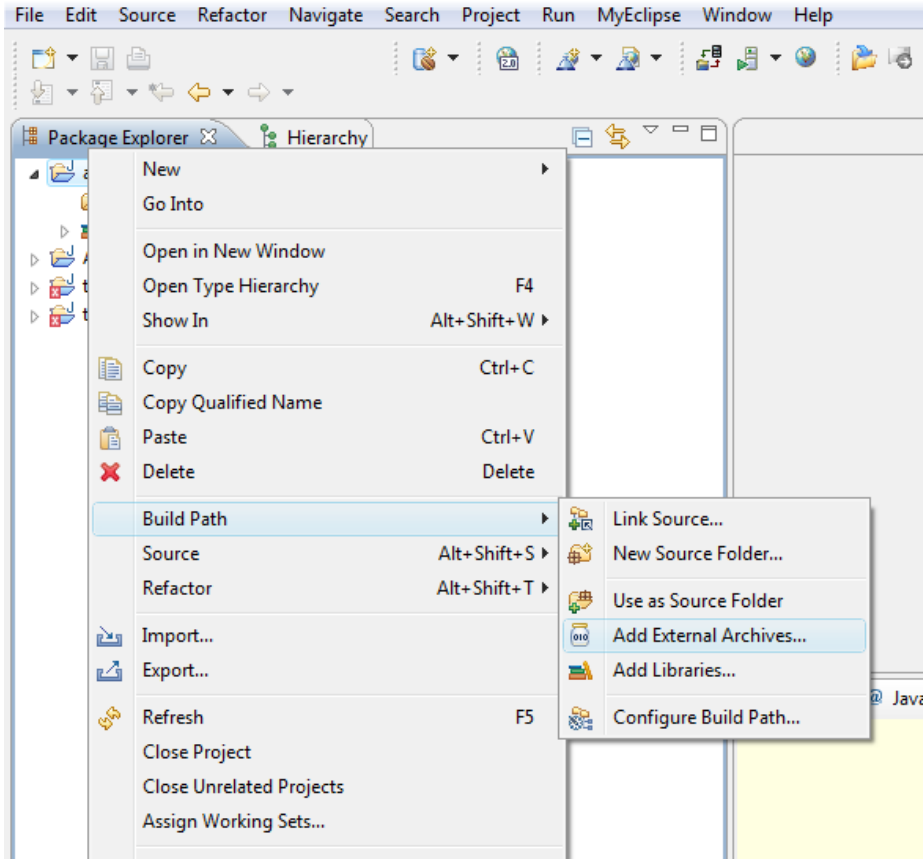


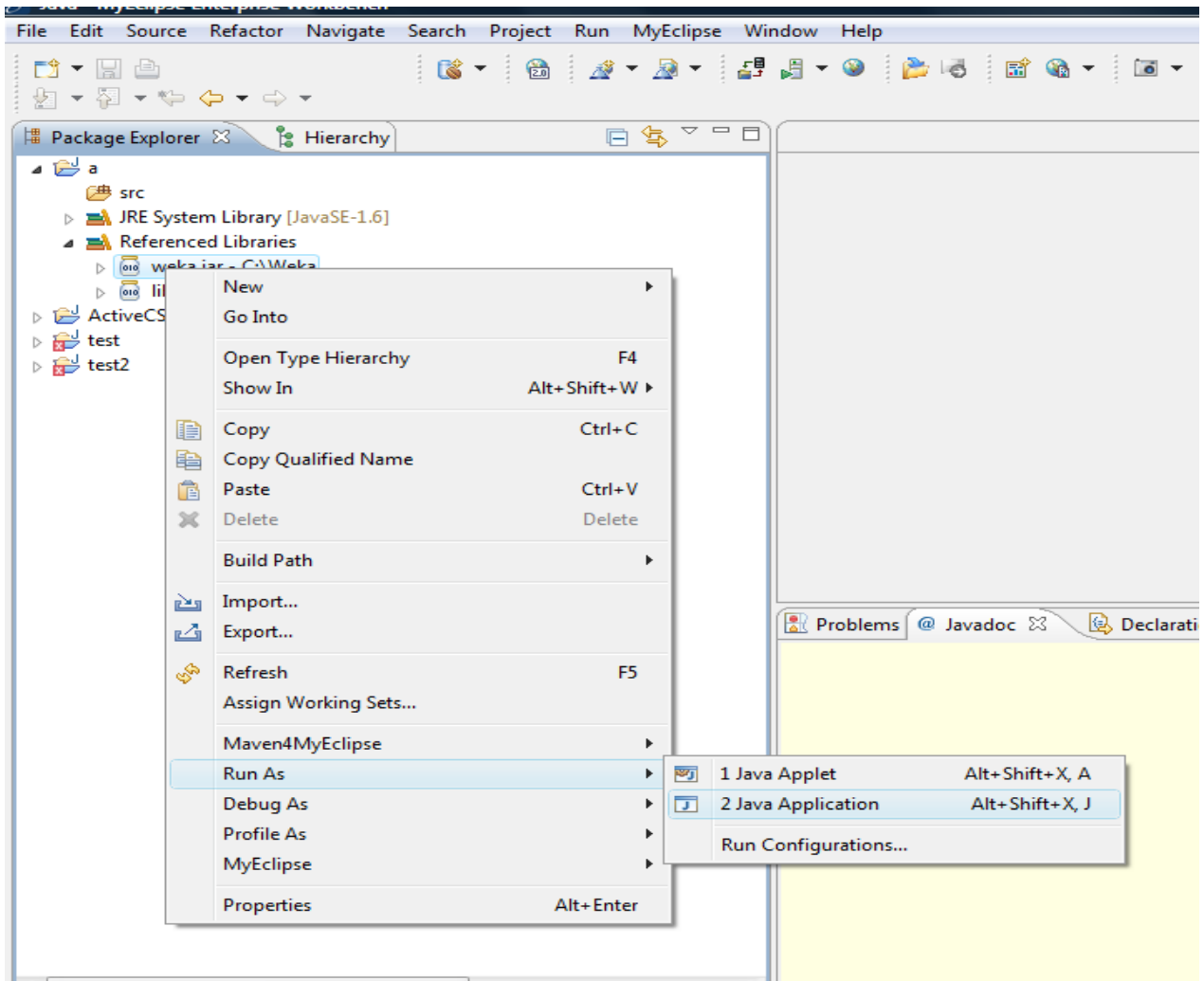
Instruction for using LibSVM in Weka

TA: Siyi Liu

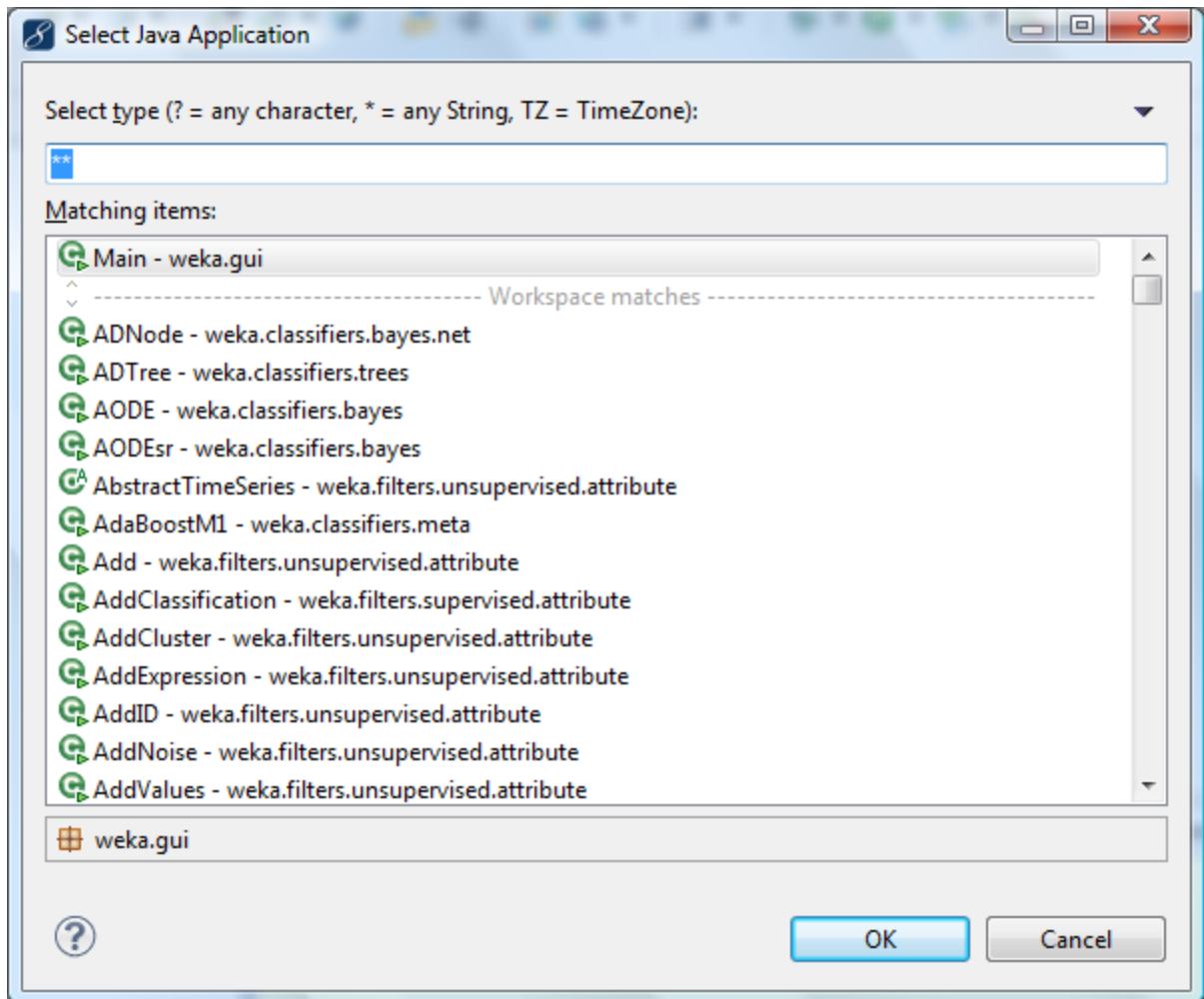
1. Download the Eclipse software and libsvm.jar from the Internet.
2. Open Eclipse and new a java project.
3. Add external Archives



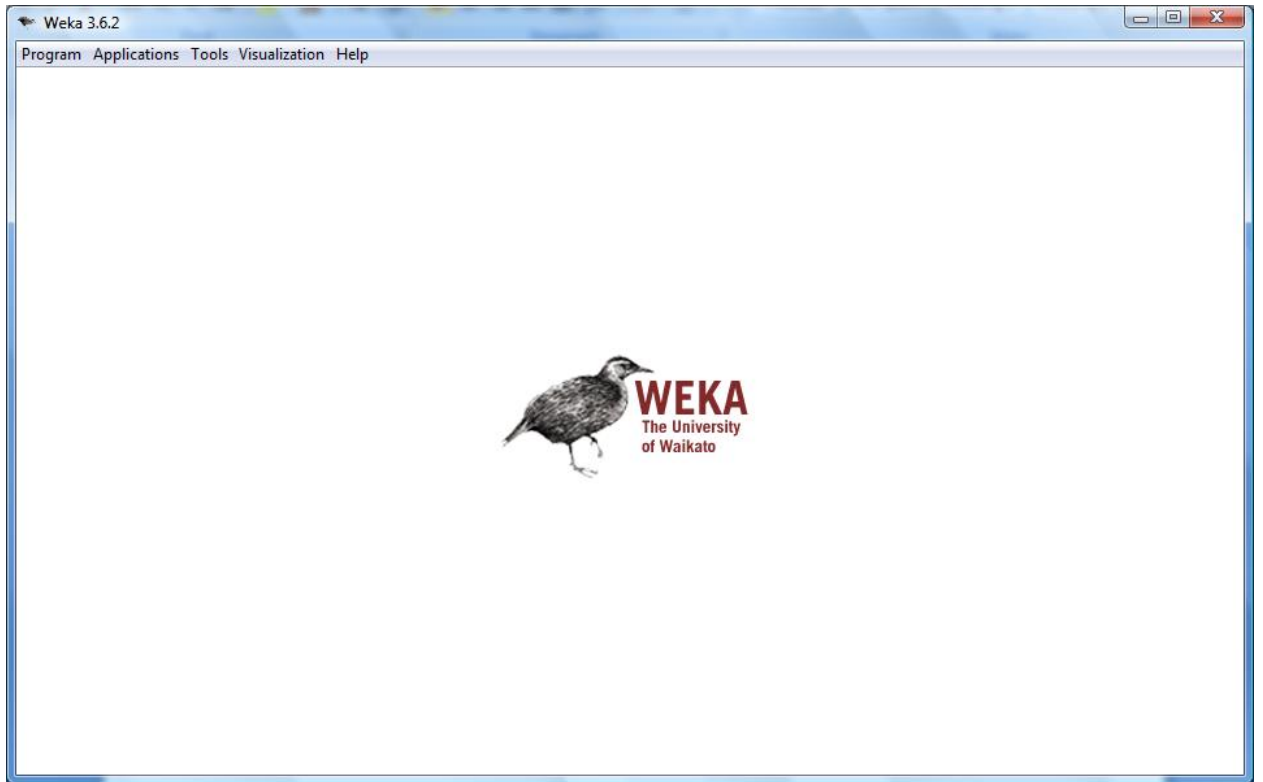
4. Add weka.jar and libsvm.jar to the java project.
5. Run weka.jar as Java Application.



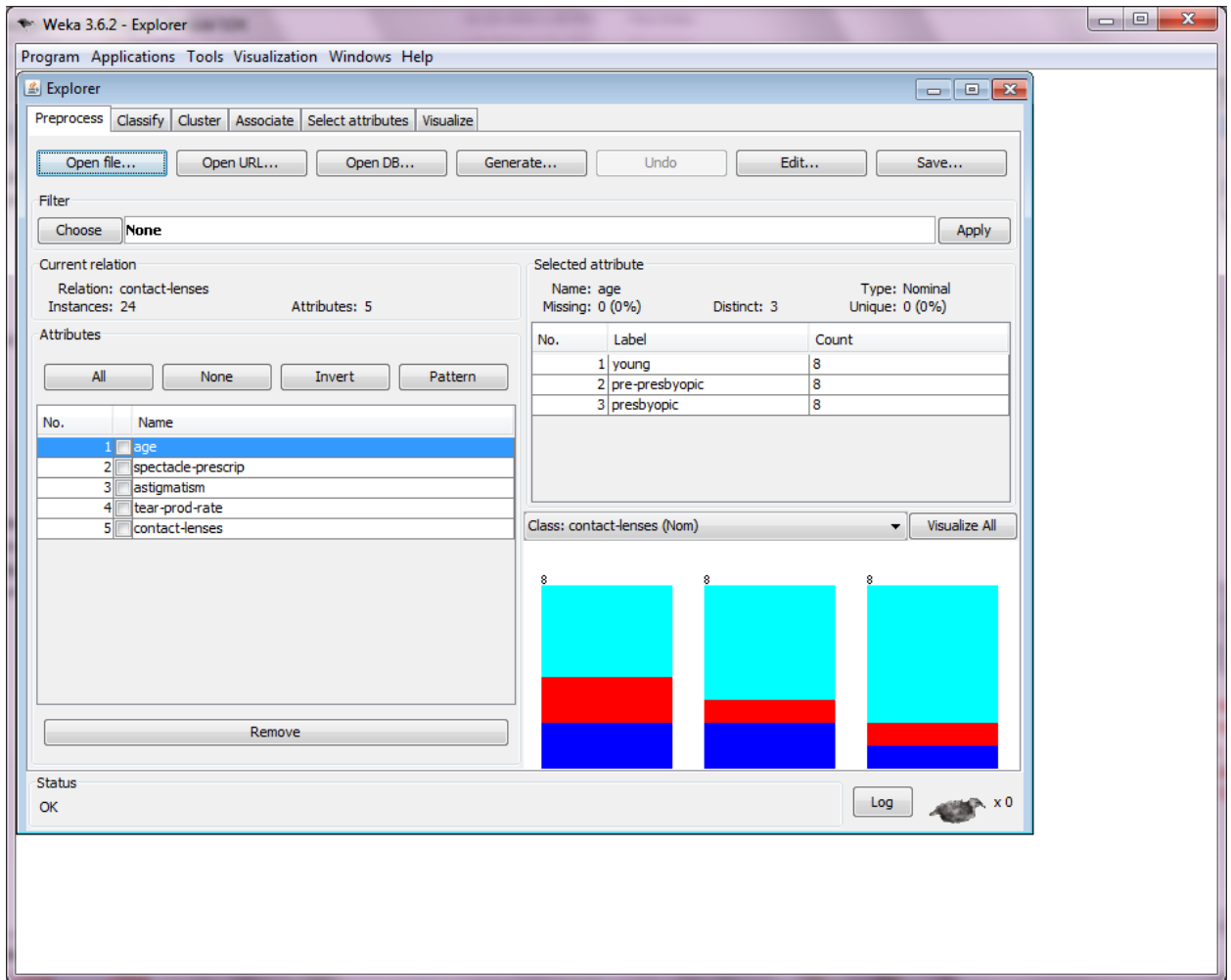
6. Select Main-weka.gui



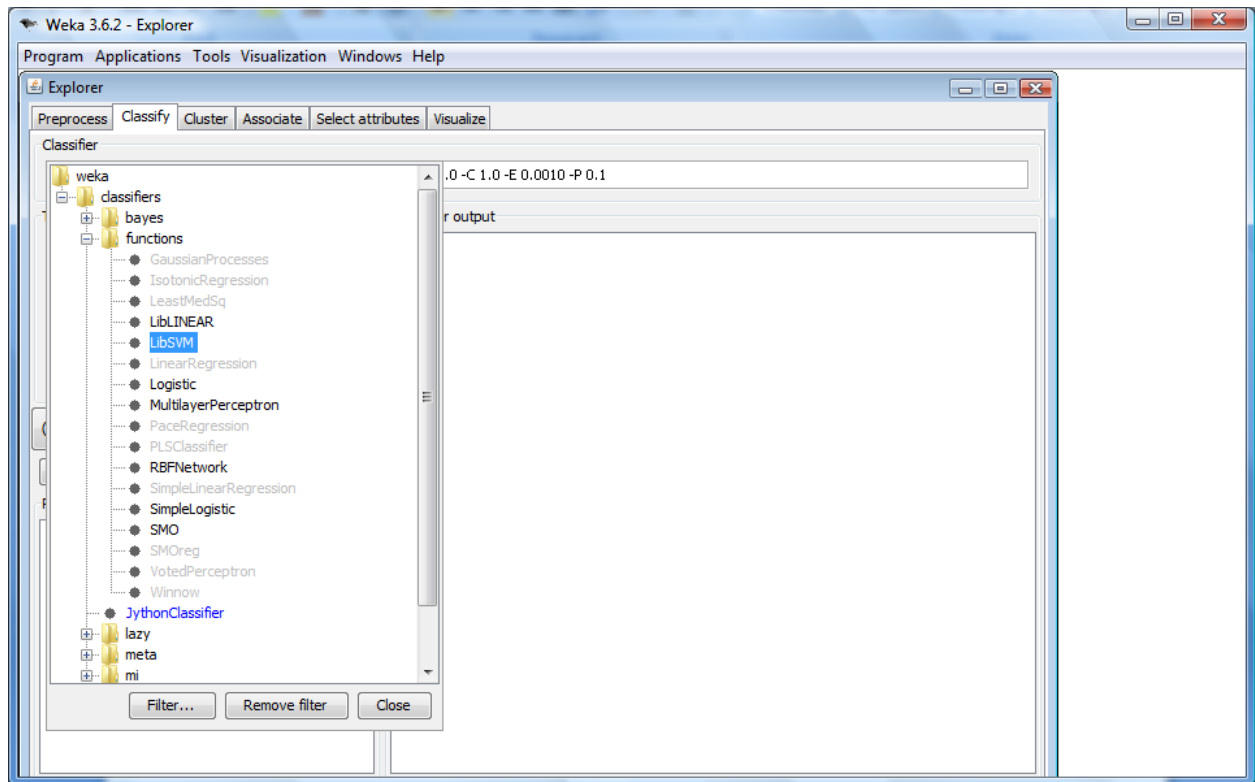
7. Click Application → Explorer



8. Select dataset



9. Select LibSVM



10. Click start, then you get the result.

Weka 3.6.2 - Explorer

Program Applications Tools Visualization Windows Help

Explorer

Preprocess Classify Cluster Associate Select attributes Visualize

Classifier

Choose LibSVM -S 0 -K 2 -D 3 -G 0.0 -R 0.0 -N 0.5 -M 40.0 -C 1.0 -E 0.0010 -P 0.1

Test options

Use training set
 Supplied test set (Set...)
 Cross-validation Folds 10
 Percentage split % 66
 More options...

(Nom) contact-lenses

Start Stop

Result list (right-click for options)

13:41:01 - functions.LibSVM

Classifier output

Kappa statistic -0.0619
 Mean absolute error 0.2778
 Root mean squared error 0.527
 Relative absolute error 73.5294 %
 Root relative squared error 120.6762 %
 Total Number of Instances 24

=== Detailed Accuracy By Class ===

	TP Rate	FP Rate	Precision	Recall	F-Measure	ROC Area
0	0	0.053	0	0	0	0.474
0	0	0	0	0	0	0.5
0.933	1	0.609	0.933	0.737	0.467	
Weighted Avg.	0.583	0.636	0.38	0.583	0.461	0.474

=== Confusion Matrix ===

```

a b c <-- classified as
0 0 5 | a = soft
0 0 4 | b = hard
1 0 14 | c = none
  
```

Status

OK Log x 0