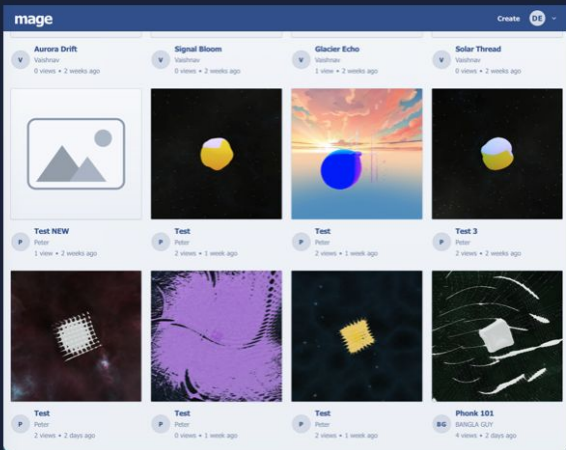


MAGE

Slide 1

Personal Contributions:



TEAM B2

Mike G.

MAGE Platform Development

My work focused on creating the account features in the back end: the ability to sign up, recover a password, and upload your own thumbnail.



Account Creation

Created user registration so new users can sign up and join the platform.



Thumbnail Management

Let users upload and manage thumbnail images for their own content.



Password Recovery

Built a recovery flow so users can regain access to their account.

MAGE

Slide 2

T-Shaped Skills

Broad

General communication across working with multiple parties, organization, and code progression

Deep

Java with spring boot, API's, docker, SQL, And GitHub

TEAM B2

T-Shaped Skills Progression

BROAD SKILLS

Client Communication

Working with the Team

Sprint Planning

Workflow Progression

Code Review

DEEP SKILLS



Account Creation

- Users can sign up with email and password
- Duplicate accounts are prevented
- Passwords are stored securely
- Input is checked before saving



Thumbnail Management

- Owners can upload a preview image
- Only the owner can make changes to their content
- Re-uploading replaces the old image
- Bad files are caught and rejected



Password Recovery

- Users can request a reset link
- Links expire and are single use
- Flow only works for established accounts
- Responses don't reveal account existence

MAGE

Slide 3

Key Points & Plans

The platform wouldn't be what it is without the users. Making the website user-friendly is essential to the success of any good social platform.

Artifacts:

<https://github.com/orgs/B2MAGE/projects/1/views/1?filterQuery=assignee%3Amichaelgp173>

Report artifacts:

</home/mgp123/cs410/R10-26.txt>

Website:

<https://mage.peterbucci.com>

Research Paper:

</home/mgp123/cs410/9707.pdf>

TEAM B2

Key Points



Accounts are essential on a social platform

The ability to easily access your account and manage it is a key feature that users look for when picking an account. Being able to easily manage your content and control your account can make the difference on what platform a user decides to join.



Login services are vital to the user experience

Without the ability to properly be able to verify a users authentication a platform fails in the user. A good service has to be able to properly handle allowing users to reset their account while keeping their privacy safe

NEXT STEPS

Expand what presets can store and show supporting audio sources

Add real analytics to the website so users can see how content performs

Bring audio to the platform without needing to host directly